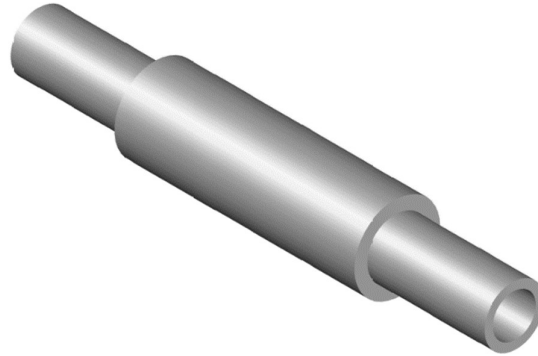


D C ISO 9001:2015 Group		Busbar Pillars	Data Sheet No: DC/CP/004
			Revision: 00



Product Overview:-

In electric power distribution, a bus bar pillar is a metallic round bar, typically housed inside switchgear, panel boards, and bus way for local high current power distribution. They are also used to connect high voltage equipment at electrical switchyards, and low voltage equipment in battery banks. They are generally uninsulated, and have sufficient stiffness to be supported in air by insulated pillars. These features allow sufficient cooling of the conductors, and the ability to tap in at various points without creating a new joint.

Main Technical Indicators :-

Busbar Pillar	
Product Code	BSBR
Technical Drawing No	DC/BP/001
Material	Mild Steel
Length	As per Customer Requirement
Standard Diameter at Centre	20 mm

We have a dedicated in house R & D to develop these braids as per your technical requirement.